

SHC Series Servo Motors and Drivers



We are a leading global provider of industrial automation solutions to OEMs and end users with servo motors & drivers, PLCs and motion controllers. The company's flexible production techniques and expert understanding of all industry sectors – from plastics to printing to packaging to iron & steel production – have allowed it to establish globally leading industry-specific business units. Over the years, we have built an engineering team with specialist expertise in industrial automation. Their combined knowledge makes the company one of the world's foremost industrial automation partners, and enables it to form long-term relationships with customers. This means that we can provide ongoing advice about how to get the most out of their automation solutions today, and how to stay prepared for the market and technology changes that are coming in future.

Driven by Technology

AC Drives



AC MultiDrives



MV Drives



Single-Axis Servos



Multi-Axes Servos

EtherCAT[®]



Robotics & Motion Controllers



PLCs & HMIs



CNC Machine Tool Solutions

EtherCAT[®]



Electric Vehicle Inverters



1. Servo Motors

1.1 MS1 series servo motors

The highly dynamic MS1 servo motor range has a wide variety of power ratings, as well as flange and brake options. The motor family benefits from a small footprint that reduces overall machine size.










MS1H1/H4 series

- From 0.16 to 3.2 Nm
- Easy motor and encoder connections
- 23 bit motor encoder feedback: +/-15 arcseconds
- Up to 350% maximum peak torque
- Torque fluctuation <0.5%
- IP67 rating
- Complies with CE and UL



MS1H2/H3 series

- From 3.2 to 47 Nm
- 23 bit motor encoder feedback: +/-15 arcseconds
- Up to 300% maximum peak torque
- Torque fluctuation <1%
- IP67 rating
- Complies with CE and UL

Voltage	220V					400V			
Frame	40 x 40	60 x 60	80 x 80	100 x 100	130 x 130	100 x 100	130 x 130	130 x 130	180 x 180
Appearance									
Type Codes	MS1H1-05B30CB-A3XXZ MS1H1-10B30CB-A3XXZ	MS1H1-20B30CB-A3XXZ MS1H1-40B30CB-A3XXZ MS1H4-40B30CB-A3XXZ	MS1H1-55B30CB-A3XXZ MS1H1-75B30CB-A3XXZ MS1H4-75B30CB-A3XXZ MS1H1-10C30CB-A3XXZ	MS1H2-10C30CB-A3XXZ MS1H2-15C30CB-A3XXZ	MS1H3-85B15CB-A3XXZ MS1H3-13C15CB-A3XXZ	MS1H2-10C30CD-A3XXZ MS1H2-15C30CD-A3XXZ MS1H2-20C30CD-A3XXZ MS1H2-25C30CD-A3XXZ	MS1H2-30C30CD-A3XXZ MS1H2-40C30CD-A3XXZ MS1H2-50C30CD-A3XXZ	MS1H3-85B15CD-A3XXZ MS1H3-13C15CD-A3XXZ MS1H3-18C15CD-A3XXZ	MS1H3-29C15CD-A3XXZ MS1H3-44C15CD-A3XXZ MS1H3-55C15CD-A3XXZ MS1H3-75C15CD-A3XXZ
Rated Speed (rpm)	3000	3000	3000	3000	1500	3000	3000	1500	1500
Rated Power (W)	50 - 100	200 - 400	550 - 1000	1000 - 1500	850 - 1300	1000 - 2500	3000 - 5000	850 - 1800	2900 - 7500
Rated Torque (N-m)	0.16 - 0.32	0.64 - 1.27	1.75 - 3.18	3.18 - 4.90	5.39 - 8.34	3.18 - 7.96	9.8 - 15.8	5.39 - 11.5	18.6 - 48.0
Applicable Drives	IS810, SV660, SV670, SV680								

Product ordering code

MS1 H1 - 75B 30C B - A3 3 1 Z - INT

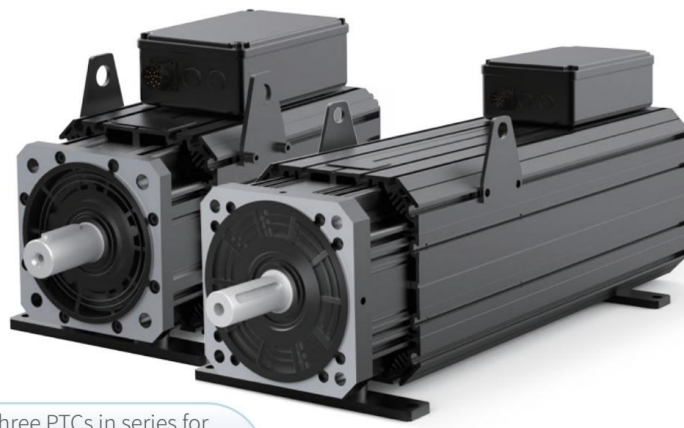
① ② ③ ④ ⑤ ⑥ ⑦ ⑧ ⑨ ⑩

<p>① Series: MS1 series servo motor</p> <p>② Inertia H1: low inertia, 40/60/80 mm flange, 3,000 RPM H2: low inertia, 100/130 mm flange, 3,000 RPM H3: medium inertia 130/180 mm flange, 1,500 RPM H4: medium inertia 60/80 mm flange, 3,000 RPM</p> <p>③ Rated power A: x 1 B: x 10 C: x 100 D: x 1,000 E: x 10,000 E.g. 75B: 750 W; 15C: 1,500 W</p>	<p>④ Rated speed A: x 1 B: x 10 C: x 100 D: x 1,000 E: x 10,000 E.g. 30C : 3,000 RPM</p> <p>⑤ Voltage class B: 220 V D: 400 V</p> <p>⑥ Encoder type A3: 23-bit single & multi-turn absolute A6: 26-bit</p>	<p>⑦ Motor shaft 1: plain 2: keyed 3: keyed + tapped hole 5: tapped hole</p> <p>⑧ Brake and oil seal options 0: no brake, no oil seal 1: oil seal 2: brake 4: brake + oil seal</p> <p>⑨ Stator pole: Y: 8 pole Z: 10 pole</p> <p>⑩ INT: international version</p>
---	--	---

Servo motor model	Rated output [kW]	Rated torque [Nm]	Peak torque [Nm]	Rated current [Arms]	Peak current [Arms]	Rated speed [RPM]	Max speed [RPM]	Torque constant [Nm/Arms]	Rotor inertia [10 ⁻⁴ x kg·m ²]		Voltage [V]
									Without brake	With brake	
MS1H1 (Nrated = 3,000 RPM, Nmax = 6,000 RPM)											
MS1H1-05B30CB-XXXXZ-INT	0.05	0.16	0.56	1.3	4.7	3,000	6,000	0.15	0.026	0.028	220
MS1H1-10B30CB-XXXXZ-INT	0.1	0.32	1.12	1.3	4.7			0.26	0.041	0.043	
MS1H1-20B30CB-XXXXZ-INT	0.2	0.64	2.24	1.5	5.8			0.46	0.207	0.220	
MS1H1-40B30CB-XXXXZ-INT	0.4	1.27	4.46	2.8	10.1			0.53	0.376	0.390	
MS1H1-55B30CB-XXXXZ-INT	0.55	1.75	6.13	3.8	15.0			0.49	1.06	1.06	
MS1H1-75B30CB-XXXXZ-INT	0.75	2.39	8.36	4.8	16.9			0.58	1.38	1.43	
MS1H1-10C30CB-XXXXZ-INT	1.0	3.18	11.1	7.6	28			0.46	1.75	1.75	
MS1H2 (Nrated = 3,000 RPM, Nmax = 5,000/6,000 RPM)											
MS1H2-10C30CB-XXXXZ-INT	1.0	3.18	9.54	7.5	23	3,000	6,000	0.43	1.87	3.12	220
MS1H2-15C30CB-XXXXZ-INT	1.5	4.9	14.7	10.8	32		5,000	0.45	2.46	3.71	
MS1H2-10C30CD-XXXXZ-INT	1.0	3.18	9.54	3.65	11		6,000	0.87	1.87	3.12	
MS1H2-15C30CD-XXXXZ-INT	1.5	4.9	14.7	4.5	14		5,000	1.09	2.46	3.71	400
MS1H2-20C30CD-XXXXZ(-S4)-INT	2.0	6.36	19.1	5.89	20			1.08	3.06	4.31	
MS1H2-25C30CD-XXXXZ(-S4)-INT	2.5	7.96	23.9	7.56	25			1.05	3.65	4.9	
MS1H2-30C30CD-XXXXZ(-S4)-INT	3.0	9.8	29.4	10	30			0.98	7.72	7.72	
MS1H2-40C30CD-XXXXZ(-S4)-INT	4.0	12.6	37.8	13.6	40.8			0.93	12.1	14.6	
MS1H2-50C30CD-XXXXZ(-S4)-INT	5.0	15.8	47.6	16	48			1.07	15.4	17.9	
MS1H3 (Nrated = 1,500 RPM, Nmax = 3,000 RPM)											
MS1H3-85B15CB-XXXXZ-INT	0.85	5.39	13.5	6.6	16.5	1,500	3,000	0.9	13.3	14	220
MS1H3-13C15CB-XXXXZ-INT	1.3	8.34	20.85	10	25			0.9	17.8	18.5	
MS1H3-85B15CD-XXXXZ-INT	0.85	5.39	13.5	3.3	8.25			1.75	13.3	14	
MS1H3-13C15CD-XXXXZ-INT	1.3	8.34	20.85	5	12.5			1.78	17.8	18.5	400
MS1H3-18C15CD-XXXXZ-INT	1.8	11.5	28.75	6.6	16.5			1.8	25	25.7	
MS1H3-29C15CD-XXXXZ-INT	2.9	18.6	37.2	11.9	28			1.7	55	57.2	
MS1H3-44C15CD-XXXXZ-INT	4.4	28.4	71.1	16.5	40.5			1.93	88.9	90.8	
MS1H3-55C15CD-XXXXZ-INT	5.5	35	87.6	20.85	52			1.8	107	109.5	
MS1H3-75C15CD-XXXXZ-INT	7.5	48	119	25.7	65			1.92	141	143.1	
MS1H4 (Nrated = 3,000 RPM, Nmax = 6,000 RPM)											
MS1H4-40B30CB-XXXXZ-INT	0.4	1.27	4.46	2.8	10.1	3,000	6,000	0.53	0.657	0.667	220
MS1H4-75B30CB-XXXXZ-INT	0.75	2.39	8.36	4.8	16.9			0.58	2	2.012	

1.2 ISMG series servo motors

Servo motor designed for energy saving servo pump applications



High overload capacity

IPM (Interior Permanent Magnet) rotor structure, with excellent electromagnetic performance

CE

Reduced iron and copper losses, higher efficiency and improved cooling

Robust resolver feedback

Higher efficiency keeps motor cool during operation, and reduces the risk of demagnetization

Forced ventilation

Three PTCs in series for consistent temperature protection. KTY for precise temperature monitoring.

- High overload capacity

- Excellent electromagnetic performance with interior permanent magnet rotor structure
- Higher efficiency and improved cooling with reduced iron and copper losses
- Robust resolver feedback
- Higher efficiency keeps motor cool during operation, and reduces the risk of demagnetization
- Forced ventilation
- Consistent temperature protection with three PTCs in series
- Precise temperature monitoring with KTY

ISM G1 - 95C 15C D - R1 A 1 F A

① ② ③ ④ ⑤ ⑥ ⑦ ⑧ ⑨ ⑩

① **Product series:**
ISM: ISM series
servo motor

② **Flange size (mm):**
G1: 200 x 200
G2: 266 x 266

③ **Rated Power (W)**
C: x 100
D: x 1000

④ **Rated speed (rpm)**
C: x 100
D: x 1000

⑤ **Voltage class**
B: 220 V
D: 380 V

⑥ **Encoder type**
A3: 23-bit absolute
R1: Resolver

⑦ **Shaft connection**
3: Keyed + tapped hole
A: Keyed + tapped hole
IPM rotor structure

⑧ **Brake, gear, oil seal**
1: Oil seal
4: Oil seal + brake

⑨ **Customised feature**
F: Forced ventilation

⑩ **Version**
A: Version A

Series		ISMG1															
Model	ISMG1-xxxxxxx-yyyFA	95C15CD	11D17CD	12D20CD	14D15CD	16D17CD	18D20CD	17D15CD	20D17CD	23D20CD	22D15CD	24D17CD	28D20CD	30D15CD	34D17CD	41D20CD	
Frame size [mm]		200 x 200															
Length [mm]		375			410			445			480			550			
Rated voltage [V]		380															
Rated frequency [Hz]		100	113.33	133.33	100	113.33	133.33	100	113.33	133.33	100	113.33	133.33	100	113.33	133.33	
Rated speed [RPM]		1,500	1,700	2,000	1,500	1,700	2,000	1,500	1,700	2,000	1,500	1,700	2,000	1,500	1,700	2,000	
Back EMF [V]		318.2	309.1	303	303	309.1	323.2	303	300.5	303	318.2	309.1	303	303	309.1	323.2	
Rated power [kW]	S1	7.9	8.9	10.5	11.8	13.4	15.7	14.5	16.4	19.3	18.1	20.5	24.1	23.6	26.7	31.4	
	S4	9.5	11	12	14	16	18	17	20	23	22	24	28	30	34	41	
Rated current [A]	S1	15.4	18.1	21.6	24.4	27.1	30.4	29.9	34.1	39.8	35.5	41.5	49.8	48.7	54.2	60.7	
	S4	18.5	21.7	26	29.2	32.5	36.4	35.7	40.7	47.6	41.7	48.7	58.4	63.3	70.4	78.9	
Rated torque [Nm]	S1	50			75			92			115			150			
	S4	60			90			110			135			195			
Peak torque [Nm]		130			180			230			280			380			
Inertia [10 ⁻³ kg·m ²]		7.5			9			10.5			12			15			
Mass [kg]		45.2			51.9			59			66			79.8			
Poles		8															

Series		ISMG2														
Model	ISMG2-xxxxxxx- yyyyFA	31D15CD	36D17CD	42D20CD	42D15CD	48D17CD	57D20CD	52D15CD	60D17CD	70D20CD	60D15CD	68D17CD	80D20CD	80D15CD	91D17CD	11E20CD
Frame size [mm]		266 x 266														
Length [mm]		525			575			625			675			775		
Rated voltage [V]		380														
Rated frequency [Hz]		100	113.33	133.33	100	113.33	133.33	100	113.33	133.33	100	113.33	133.33	100	113.33	133.33
Rated speed [RPM]		1,500	1,700	2,000	1,500	1,700	2,000	1,500	1,700	2,000	1,500	1,700	2,000	1,500	1,700	2,000
Back EMF [V]		318.2	309.1	303	303	309.1	323.2	303	300.5	303	318.2	309.1	303	303	343.4	323.2
Rated power [kW]	S1	26.7	30.3	35.6	36.1	40.9	48.2	44.8	50.7	59.7	53.4	60.5	71.2	69.1	78.3	92.1
	S4	31	36	42	42	48	57	52	60	70	60	68	80	80	91	110
Rated current [A]	S1	52.5	61.4	73.6	74.7	83	93.1	94.1	107.5	125.6	104.9	122.7	147.2	142.9	142.9	178.1
	S4	61.7	72.2	86.6	87.7	97.5	109.3	110.6	126.4	147.6	118.8	139	166.7	165.6	165.6	206.5
Rated torque [Nm]	S1	170			230			285			340			440		
	S4	200			270			335			385			510		
Peak torque [Nm]		330			440			550			660			825		
Inertia [10 ⁻³ kg·m ²]		29.6			36.8			43.4			50			64		
Mass [kg]		122			141.3			158.4			175.4			217		
Poles																

2. Servo Drivers

2.1 SV660N servo drivers

High dynamic performance with a compact footprint: the SV660N servo solution for industrial automation applications

- User friendly installation
- Easy set-up and tuning
- Ultra-fast 4.5kHz current loop
- Speed loop bandwidth up to 3kHz
- Supply voltage: Single phase 220V; Three phase 220V; Three phase 380V
- 0.1-7.5kW
- Safe Torque Off - SIL3
- Complies with CE and UL



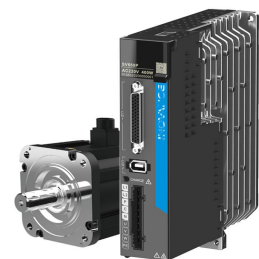
Power supply voltage	Motor base speed (RPM)	Motor maximum speed (RPM)	Motor power (W)	Motor rated torque (N·m)	Motor peak torque (N·m)	Motor frame size (mm)	Rotor inertia (0.0001x kg·m ²)	MS1 motor type	SV660N type	SV660N rated current (A)	SV660N peak current (A)	Size	Dimensions H x W x D (mm)	Connector kit
1PH 220V	3000	6000	50	0.16	0.56	40X40	0.026	MS1H1-05B30CB-A330Z	SV660NS1R6I-FS-INT	1.6	5.80	A	170X40X150	S6-C22
	3000	6000	100	0.32	1.12	40X40	0.041	MS1H1-10B30CB-A330Z	SV660NS1R6I-FS-INT	1.6	5.80	A	170X40X150	S6-C22
	3000	6000	200	0.64	2.24	60X60	0.207	MS1H1-20B30CB-A331Z	SV660NS1R6I-FS-INT	1.6	5.80	A	170X40X150	S6-C22
	3000	6000	400	1.27	4.46	60X60	0.376	MS1H1-40B30CB-A331Z	SV660NS2R8I-FS-INT	2.8	10.10	A	170X40X150	S6-C22
	3000	6000	400	1.27	4.46	60X60	0.657	MS1H4-40B30CB-A331Z	SV660NS2R8I-FS-INT	2.8	10.10	A	170X40X150	S6-C22
	3000	6000	550	1.75	6.13	80X80	1.06	MS1H1-55B30CB-A331Z*	SV660NS5R5I-FS-INT	5.5	16.90	B	170X50X173	S6-C22
	3000	6000	750	2.39	8.36	80X80	1.38	MS1H1-75B30CB-A331Z	SV660NS5R5I-FS-INT	5.5	16.90	B	170X50X173	S6-C22
	3000	6000	750	2.39	8.36	80X80	2	MS1H4-75B30CB-A331Z	SV660NS5R5I-FS-INT	5.5	16.90	B	170X50X173	S6-C22
1/3 PH 220V	1500	3000	850	5.39	13.50	130X130	13.3	MS1H3-85B15CB-A331Z	SV660NS7R6I-FS-INT	7.6	23.00	C	170X55X173	S6-C29
	3000	6000	1000	3.18	9.12	80X80	1.75	MS1H1-10C30CB-A331Z*	SV660NS7R6I-FS-INT	7.6	23.00	C	170X55X173	S6-C22
	3000	6000	1000	3.18	11.10	80X80	1.75	MS1H1-10C30CB-A331Z*	SV660NS012I-FS-INT	11.6	32.00	D	170X80X183	S6-C22
	3000	6000	1000	3.18	9.54	100X100	1.87	MS1H2-10C30CB-A331Z	SV660NS7R6I-FS-INT	7.6	23.00	C	170X55X173	S6-C29
	1500	3000	1300	8.34	20.85	130X130	17.8	MS1H3-13C15CB-A331Z	SV660NS012I-FS-INT	11.6	32.00	D	170X80X183	S6-C29
	3000	5000	1500	4.9	14.70	100X100	2.46	MS1H2-15C30CB-A331Z	SV660NS012I-FS-INT	11.6	32.00	D	170X80X183	S6-C29
3 PH 400V	3000	6000	1000	3.18	9.54	100X100	1.87	MS1H2-10C30CD-A331Z	SV660NT5R4I-FS-INT	5.4	14.00	C	170X55X173	S6-C29
	3000	5000	1500	4.9	14.70	100X100	2.46	MS1H2-15C30CD-A331Z	SV660NT5R4I-FS-INT	5.4	14.00	C	170X55X173	S6-C29
	3000	5000	2000	6.36	19.10	100X100	3.06	MS1H2-20C30CD-A331Z	SV660NT8R4I-FS-INT	8.4	20.00	D	170X80X183	S6-C29
	3000	5000	2500	7.96	19.12	100X100	3.65	MS1H2-25C30CD-A331Z	SV660NT8R4I-FS-INT	8.4	20.00	D	170X80X183	S6-C29
	3000	5000	2500	7.96	23.90	100X100	3.65	MS1H2-25C30CD-A331Z	SV660NT012I-FS-INT	11.9	29.75	D	170X80X183	S6-C29
	3000	5000	3000	9.8	29.16	130X130	7.72	MS1H2-30C30CD-A331Z	SV660NT012I-FS-INT	11.9	29.75	D	170X80X183	S6-C29
	3000	5000	3000	9.8	29.40	130X130	7.72	MS1H2-30C30CD-A331Z	SV660NT017I-FS-INT	16.5	41.25	E	250X90X230	S6-C29
	3000	5000	4000	12.6	37.80	130X130	12.1	MS1H2-40C30CD-A331Z	SV660NT017I-FS-INT	16.5	41.25	E	250X90X230	S6-C29
	3000	5000	5000	15.8	40.91	130X130	15.4	MS1H2-50C30CD-A331Z	SV660NT017I-FS-INT	16.5	41.25	E	250X90X230	S6-C29
	3000	5000	5000	15.8	47.60	130X130	15.4	MS1H2-50C30CD-A331Z	SV660NT021I-FS-INT	20.8	52.12	E	250X90X230	S6-C29
	1500	3000	850	5.39	13.50	130X130	13.3	MS1H3-85B15CD-A331Z	SV660NT3R5I-FS-INT	3.5	11.00	C	170X55X173	S6-C29
	1500	3000	1300	8.34	20.85	130X130	17.8	MS1H3-13C15CD-A331Z	SV660NT5R4I-FS-INT	5.4	14.00	C	170X55X173	S6-C29
	1500	3000	1800	11.5	28.75	130X130	25	MS1H3-18C15CD-A331Z	SV660NT8R4I-FS-INT	8.4	20.00	D	170X80X183	S6-C29
	1500	3000	2900	18.6	37.20	180X180	55	MS1H3-29C15CD-A331Z	SV660NT012I-FS-INT	11.9	29.75	D	170X80X183	S6-C39
	1500	3000	4400	28.4	71.10	180X180	88.9	MS1H3-44C15CD-A331Z	SV660NT017I-FS-INT	16.5	41.25	E	250X90X230	S6-C39
	1500	3000	5500	35	87.60	180X180	107	MS1H3-55C15CD-A331Z	SV660NT021I-FS-INT	20.8	52.12	E	250X90X230	S6-C39
	1500	3000	7500	48	117.63	180X180	141	MS1H3-75C15CD-A331Z	SV660NT026I-FS-INT	25.7	64.25	E	250X90X230	S6-C39

*Brake option not available.
 All MS1 motors are CE certified and UL listed.

2.2 SV660P - Single-Axis Pulse Servo Driver

Performance and flexibility in a compact footprint.

- User friendly installation
- Easy set-up and tuning
- CANopen (C) and CANlink (A) variants also available
- Speed loop bandwidth up to 2kHz
- Supply voltage: Single phase 220V; Three phase 220V; Three phase 380V
- 0.1-7.5 kW
- Complies with CE and U



Product variants:

(1) SV660P - pulse control variant

Pulse interface for position control (4MHz maximum input frequency).

(2) SV660C - CANopen variant

Compliant with CiA 402 device profile (IEC 61800-7-201/301), supporting several operation modes.

(3) SV660A - CANlink variant

Uses our proprietary protocol, in combination with our controller products

Power supply voltage	Motor base speed (RPM)	Motor maximum speed (RPM)	Motor power (W)	Motor rated torque (N·m)	Motor peak torque (N·m)	Motor frame size (mm)	Rotor inertia (0.0001x kg·m ²)	MS1 motor type	SV660x type Where "X" can be the P (pulse), C (CANopen) or A (CANlink) variants	SV660x rated current (A)	SV660x peak current (A)	Size	Dimensions H x W x D (mm)	Connector kit
1PH 220V	3000	6000	50	0.16	0.56	40X40	0.026	MS1H1-05B30CB-A330Z	SV660xS1R6I-INT	1.6	5.80	A	170X40X150	S6-C22
	3000	6000	100	0.32	1.12	40X40	0.041	MS1H1-10B30CB-A330Z	SV660xS1R6I-INT	1.6	5.80	A	170X40X150	S6-C22
	3000	6000	200	0.64	2.24	60X60	0.207	MS1H1-20B30CB-A331Z	SV660xS1R6I-INT	1.6	5.80	A	170X40X150	S6-C22
	3000	6000	400	1.27	4.46	60X60	0.376	MS1H1-40B30CB-A331Z	SV660xS2R8I-INT	2.8	10.10	A	170X40X150	S6-C22
	3000	6000	400	1.27	4.46	60X60	0.657	MS1H4-40B30CB-A331Z	SV660xS2R8I-INT	2.8	10.10	A	170X40X150	S6-C22
	3000	6000	550	1.75	6.13	80X80	1.06	MS1H1-55B30CB-A331Z*	SV660xS5R5I-INT	5.5	16.90	B	170X50X173	S6-C22
	3000	6000	750	2.39	8.36	80X80	1.38	MS1H1-75B30CB-A331Z	SV660xS5R5I-INT	5.5	16.90	B	170X50X173	S6-C22
	3000	6000	750	2.39	8.36	80X80	2	MS1H4-75B30CB-A331Z	SV660xS5R5I-INT	5.5	16.90	B	170X50X173	S6-C22
1/3PH 220V	1500	3000	850	5.39	13.50	130X130	13.3	MS1H3-85B15CB-A331Z	SV660xS7R6I-INT	7.6	23.00	C	170X55X173	S6-C29
	3000	6000	1000	3.18	9.12	80X80	1.75	MS1H1-10C30CB-A331Z*	SV660xS7R6I-INT	7.6	23.00	C	170X55X173	S6-C22
	3000	6000	1000	3.18	11.10	80X80	1.75	MS1H1-10C30CB-A331Z*	SV660xS012I-INT	11.6	32.00	D	170X80X183	S6-C22
	3000	6000	1000	3.18	9.54	100X100	1.87	MS1H2-10C30CB-A331Z	SV660xS7R6I-INT	7.6	23.00	C	170X55X173	S6-C29
	1500	3000	1300	8.34	20.85	130X130	17.8	MS1H3-13C15CB-A331Z	SV660xS012I-INT	11.6	32.00	D	170X80X183	S6-C29
	3000	5000	1500	4.9	14.70	100X100	2.46	MS1H2-15C30CB-A331Z	SV660xS012I-INT	11.6	32.00	D	170X80X183	S6-C29
3 PH 400V	3000	6000	1000	3.18	9.54	100X100	1.87	MS1H2-10C30CD-A331Z	SV660xT5R4I-INT	5.4	14.00	C	170X55X173	S6-C29
	3000	5000	1500	4.9	14.70	100X100	2.46	MS1H2-15C30CD-A331Z	SV660xT5R4I-INT	5.4	14.00	C	170X55X173	S6-C29
	3000	5000	2000	6.36	19.10	100X100	3.06	MS1H2-20C30CD-A331Z	SV660xT8R4I-INT	8.4	20.00	D	170X80X183	S6-C29
	3000	5000	2500	7.96	19.12	100X100	3.65	MS1H2-25C30CD-A331Z	SV660xT8R4I-INT	8.4	20.00	D	170X80X183	S6-C29
	3000	5000	2500	7.96	23.90	100X100	3.65	MS1H2-25C30CD-A331Z	SV660xT012I-INT	11.9	29.75	D	170X80X183	S6-C29
	3000	5000	3000	9.8	29.16	130X130	7.72	MS1H2-30C30CD-A331Z	SV660xT012I-INT	11.9	29.75	D	170X80X183	S6-C29
	3000	5000	3000	9.8	29.40	130X130	7.72	MS1H2-30C30CD-A331Z	SV660xT017I-INT	16.5	41.25	E	250X90X230	S6-C29
	3000	5000	4000	12.6	37.80	130X130	12.1	MS1H2-40C30CD-A331Z	SV660xT017I-INT	16.5	41.25	E	250X90X230	S6-C29
	3000	5000	5000	15.8	40.91	130X130	15.4	MS1H2-50C30CD-A331Z	SV660xT017I-INT	16.5	41.25	E	250X90X230	S6-C29
	3000	5000	5000	15.8	47.60	130X130	15.4	MS1H2-50C30CD-A331Z	SV660xT021I-INT	20.8	52.12	E	250X90X230	S6-C29
	1500	3000	850	5.39	13.50	130X130	13.3	MS1H3-85B15CD-A331Z	SV660xT3R5I-INT	3.5	11.00	C	170X55X173	S6-C29
	1500	3000	1300	8.34	20.85	130X130	17.8	MS1H3-13C15CD-A331Z	SV660xT5R4I-INT	5.4	14.00	C	170X55X173	S6-C29
	1500	3000	1800	11.5	28.75	130X130	25	MS1H3-18C15CD-A331Z	SV660xT8R4I-INT	8.4	20.00	D	170X80X183	S6-C29
	1500	3000	2900	18.6	37.20	180X180	55	MS1H3-29C15CD-A331Z	SV660xT012I-INT	11.9	29.75	D	170X80X183	S6-C39
	1500	3000	4400	28.4	71.10	180X180	88.9	MS1H3-44C15CD-A331Z	SV660xT017I-INT	16.5	41.25	E	250X90X230	S6-C39
	1500	3000	5500	35	87.60	180X180	107	MS1H3-55C15CD-A331Z	SV660xT021I-INT	20.8	52.12	E	250X90X230	S6-C39
	1500	3000	7500	48	117.63	180X180	141	MS1H3-75C15CD-A331Z	SV660xT026I-INT	25.7	64.25	E	250X90X230	S6-C39

2.3 SV660F – Single-Axis PROFINET Servo Driver

High dynamic performance with a compact footprint:
 the SV660F servo solution for industrial automation applications.

- User friendly installation
- Easy set-up and tuning
- Ultra-fast 4.5kHz current loop
- Safe Torque Off - SIL3
- PROFINET RT and IRT communication
- Supports PROFIdrive device profile



Power supply voltage	Motor base speed (RPM)	Motor maximum speed (RPM)	Motor power (W)	Motor rated torque (N·m)	Motor peak torque (N·m)	Motor frame size (mm)	Rotor inertia (0.0001x kg·m ²)	MS1 motor type	SV660F type	SV660F rated current (A)	SV660F peak current (A)	Size	Dimensions H x W x D (mm)	Connector kit
1PH 220V	3000	6000	50	0.16	0.56	40X40	0.026	MS1H1-05B30CB-A330Z	SV660FS1R6I	1.6	5.80	A	170X40X150	S6-C22
	3000	6000	100	0.32	1.12	40X40	0.041	MS1H1-10B30CB-A330Z	SV660FS1R6I	1.6	5.80	A	170X40X150	S6-C22
	3000	6000	200	0.64	2.24	60X60	0.207	MS1H1-20B30CB-A331Z	SV660FS1R6I	1.6	5.80	A	170X40X150	S6-C22
	3000	6000	400	1.27	4.46	60X60	0.376	MS1H1-40B30CB-A331Z	SV660FS2R8I	2.8	10.10	A	170X40X150	S6-C22
	3000	6000	400	1.27	4.46	60X60	0.657	MS1H4-40B30CB-A331Z	SV660FS2R8I	2.8	10.10	A	170X40X150	S6-C22
	3000	6000	550	1.75	6.13	80X80	1.06	MS1H1-55B30CB-A331Z*	SV660FS5R5I	5.5	16.90	B	170X50X173	S6-C22
	3000	6000	750	2.39	8.36	80X80	1.38	MS1H1-75B30CB-A331Z	SV660FS5R5I	5.5	16.90	B	170X50X173	S6-C22
	3000	6000	750	2.39	8.36	80X80	2	MS1H4-75B30CB-A331Z	SV660FS5R5I	5.5	16.90	B	170X50X173	S6-C22
1/3 PH 220V	1500	3000	850	5.39	13.50	130X130	13.3	MS1H3-85B15CB-A331Z	SV660FS7R6I	7.6	23.00	C	170X55X173	S6-C29
	3000	6000	1000	3.18	9.12	80X80	1.75	MS1H1-10C30CB-A331Z*	SV660FS7R6I	7.6	23.00	C	170X55X173	S6-C22
	3000	6000	1000	3.18	11.10	80X80	1.75	MS1H1-10C30CB-A331Z*	SV660FS012I	11.6	32.00	D	170X80X183	S6-C22
	3000	6000	1000	3.18	9.54	100X100	1.87	MS1H2-10C30CB-A331Z	SV660FS7R6I	7.6	23.00	C	170X55X173	S6-C29
	1500	3000	1300	8.34	20.85	130X130	17.8	MS1H3-13C15CB-A331Z	SV660FS012I	11.6	32.00	D	170X80X183	S6-C29
	3000	5000	1500	4.9	14.70	100X100	2.46	MS1H2-15C30CB-A331Z	SV660FS012I	11.6	32.00	D	170X80X183	S6-C29
3 PH 400V	3000	6000	1000	3.18	9.54	100X100	1.87	MS1H2-10C30CD-A331Z	SV660FT5R4I	5.4	14.00	C	170X55X173	S6-C29
	3000	5000	1500	4.9	14.70	100X100	2.46	MS1H2-15C30CD-A331Z	SV660FT5R4I	5.4	14.00	C	170X55X173	S6-C29
	3000	5000	2000	6.36	19.10	100X100	3.06	MS1H2-20C30CD-A331Z	SV660FT8R4I	8.4	20.00	D	170X80X183	S6-C29
	3000	5000	2500	7.96	19.12	100X100	3.65	MS1H2-25C30CD-A331Z	SV660FT8R4I	8.4	20.00	D	170X80X183	S6-C29
	3000	5000	2500	7.96	23.90	100X100	3.65	MS1H2-25C30CD-A331Z	SV660FT012I	11.9	29.75	D	170X80X183	S6-C29
	3000	5000	3000	9.8	29.16	130X130	7.72	MS1H2-30C30CD-A331Z	SV660FT012I	11.9	29.75	D	170X80X183	S6-C29
	3000	5000	3000	9.8	29.40	130X130	7.72	MS1H2-30C30CD-A331Z	SV660FT017I	16.5	41.25	E	250X90X230	S6-C29
	3000	5000	4000	12.6	37.80	130X130	12.1	MS1H2-40C30CD-A331Z	SV660FT017I	16.5	41.25	E	250X90X230	S6-C29
	3000	5000	5000	15.8	40.91	130X130	15.4	MS1H2-50C30CD-A331Z	SV660FT017I	16.5	41.25	E	250X90X230	S6-C29
	3000	5000	5000	15.8	47.60	130X130	15.4	MS1H2-50C30CD-A331Z	SV660FT021I	20.8	52.12	E	250X90X230	S6-C29
	1500	3000	850	5.39	13.50	130X130	13.3	MS1H3-85B15CD-A331Z	SV660FT3R5I	3.5	11.00	C	170X55X173	S6-C29
	1500	3000	1300	8.34	20.85	130X130	17.8	MS1H3-13C15CD-A331Z	SV660FT5R4I	5.4	14.00	C	170X55X173	S6-C29
	1500	3000	1800	11.5	28.75	130X130	25	MS1H3-18C15CD-A331Z	SV660FT8R4I	8.4	20.00	D	170X80X183	S6-C29
	1500	3000	2900	18.6	37.20	180X180	55	MS1H3-29C15CD-A331Z	SV660FT012I	11.9	29.75	D	170X80X183	S6-C39
	1500	3000	4400	28.4	71.10	180X180	88.9	MS1H3-44C15CD-A331Z	SV660FT017I	16.5	41.25	E	250X90X230	S6-C39
	1500	3000	5500	35	87.60	180X180	107	MS1H3-55C15CD-A331Z	SV660FT021I	20.8	52.12	E	250X90X230	S6-C39
	1500	3000	7500	48	117.63	180X180	141	MS1H3-75C15CD-A331Z	SV660FT026I	25.7	64.25	E	250X90X230	S6-C39

*Brake option not available

2.4 SV670P – Single-Axis Pulse Servo Driver

- User friendly installation
- Easy set-up and tuning
- CANopen (C) and CANlink (A) variants also available
- Safe Torque Off - SIL 3
 - 1/3 ph 200V, 3 ph 400V, kW to 7.5kW
- Ultra-fast 4.5kHz current loop
- Feedback encoder interface: serial (Weton), Nikon and Tamagawa
- Second encoder interface: incremental quadrature
- +24VDC backup control supply variant available



Product variants:

(1) SV670P - pulse control variant

Pulse interface for position control (4MHz maximum input frequency).

(2) SV670C - CANopen variant

Compliant with CiA 402 device profile (IEC 61800-7-201/301), supporting several operation modes.

(3) SV670A - CANlink variant

Uses our proprietary protocol, in combination with our controller products

Power supply voltage	Motor base speed (RPM)	Motor max speed (RPM)	Motor power (W)	Motor rated torque (N·m)	Motor peak torque (N·m)	Motor frame size (mm)	Rotor inertia (0.0001x kg·m ²)	SV670 current (rated)	SV670 current (peak)	MS1 motor type	SV670x type Where "X" can be the P (pulse), C (CANopen) or A (CANlink) variants	Size	Dimensions H x W x D (mm)	Motor mass (kg)	Drive mass (kg)	Connector kit
1PH 220V	3000	6000	50	0.16	0.56	40X40	0.026	1.6	5.80	MS1H1-05B30CB-A330Z	SV670xS1R6I-FS(-INT)	A	170X45.5X150	0.5	1.13	S6-C22
	3000	6000	100	0.32	1.12	40X40	0.041	1.6	5.80	MS1H1-10B30CB-A330Z	SV670xS1R6I-FS(-INT)	A	170X45.5X150	0.5	1.13	S6-C22
	3000	6000	200	0.64	2.24	60X60	0.207	1.6	5.80	MS1H1-20B30CB-A331Z	SV670xS1R6I-FS(-INT)	A	170X45.5X150	1	1.13	S6-C22
	3000	6000	400	1.27	4.46	60X60	0.376	2.8	10.10	MS1H1-40B30CB-A331Z	SV670xS2R8I-FS(-INT)	A	170X45.5X150	1	1.13	S6-C22
	3000	6000	400	1.27	4.46	60X60	0.657	2.8	10.10	MS1H4-40B30CB-A331Z	SV670xS2R8I-FS(-INT)	A	170X45.5X150	1.5	1.13	S6-C22
	3000	6000	550	1.75	6.13	80X80	1.06	5.5	16.90	MS1H1-55B30CB-A331Z*	SV670xS5R5I-FS(-INT)	C	170X55X173	2	1.5	S6-C22
	3000	6000	750	2.39	8.36	80X80	1.38	5.5	16.90	MS1H1-75B30CB-A331Z	SV670xS5R5I-FS(-INT)	C	170X55X173	2.5	1.5	S6-C22
	3000	6000	750	2.39	8.36	80X80	2	5.5	16.90	MS1H4-75B30CB-A331Z	SV670xS5R5I-FS(-INT)	C	170X55X173	2.5	1.5	S6-C22
1/3 PH 220V	1500	3000	850	5.39	13.50	130X130	13.3	7.6	23.00	MS1H3-85B15CB-A331Z	SV670xS7R6I-FS(-INT)	C	170X55X173	6.7	1.5	S6-C29
	3000	6000	1000	3.18	9.12	80X80	1.75	7.6	23.00	MS1H1-10C30CB-A331Z*	SV670xS7R6I-FS(-INT)	C	170X55X173	3	1.5	S6-C22
	3000	6000	1000	3.18	11.10	80X80	1.75	11.6	32.00	MS1H1-10C30CB-A331Z*	SV670xS012I-FS(-INT)	D	170X80X183	3	2	S6-C22
	3000	6000	1000	3.18	9.54	100X100	1.87	7.6	23.00	MS1H2-10C30CB-A331Z	SV670xS7R6I-FS(-INT)	C	170X55X173	5.6	1.5	S6-C29
	1500	3000	1300	8.34	20.85	130X130	17.8	11.6	32.00	MS1H3-13C15CB-A331Z	SV670xS012I-FS(-INT)	D	170X80X183	8.15	2	S6-C29
	3000	5000	1500	4.9	14.70	100X100	2.46	11.6	32.00	MS1H2-15C30CB-A331Z	SV670xS012I-FS(-INT)	D	170X80X183	6.8	2	S6-C29
3 PH 220V	3000	6000	2000	6.36	19.10	100x100	2.92	18.0	45.00	MS1H2-20C30CB-A331R	SV670xS018I-FS(-INT)	E	250x90x230	8.00	3.94	S6-C29
	3000	6000	3000	7.96	23.90	100x100	3.49	22.0	55.00	MS1H2-25C30CB-A331R	SV670xS022I-FS(-INT)	E	250x90x230	9.10	3.94	S6-C29
	3000	6000	3000	9.8	29.40	130x130	6.4	22.0	55.00	MS1H2-30C30CB-A331R	SV670xS022I-FS(-INT)	E	250x90x230	11.60	3.94	S6-C29
	3000	6000	4000	12.6	37.80	130x130	9	27.0	67.50	MS1H2-40C30CB-A331R	SV670xS027I-FS(-INT)	E	250x90x230	16.60	3.94	S6-C29
	3000	6000	5000	15.8	47.40	130x130	11.6	27.0	67.50	MS1H2-13C15CB-A331Z	SV670xS027I-FS(-INT)	E	250x90x230	18.80	3.94	S6-C29
	1500	4500	1800	11.5	28.75	130x130	24.9	18.0	45.00	MS1H3-18C15CB-A331R	SV670xS018I-FS(-INT)	E	250x90x230	8.50	3.94	S6-C29
	1500	4500	2900	18.6	46.50	180x180	44.7	22.0	55.00	MS1H3-29C15CB-A331R	SV670xS022I-FS(-INT)	E	250x90x230	13.80	3.94	S6-C39
	1500	4500	4400	28.4	71.10	180x180	64.9	27.0	67.50	MS1H3-44C15CB-A331R	SV670xS027I-FS(-INT)	E	250x90x230	17.40	3.94	S6-C39
	3000	6000	1000	3.18	9.54	100X100	1.87	5.4	14.00	MS1H2-10C30CD-A331Z	SV670xT5R4I-FS(-INT)	C	170X55X173	5.65	1.5	S6-C29
	3000	5000	1500	4.9	14.70	100X100	2.46	5.4	14.00	MS1H2-15C30CD-A331Z	SV670xT5R4I-FS(-INT)	C	170X55X173	6.7	1.5	S6-C29
3 PH 400V	3000	5000	2000	6.36	19.10	100X100	3.06	8.4	20.00	MS1H2-20C30CD-A331Z	SV670xT8R4I-FS(-INT)	D	170X80X183	8.1	2	S6-C29
	3000	5000	2500	7.96	19.12	100X100	3.65	8.4	20.00	MS1H2-25C30CD-A331Z	SV670xT8R4I-FS(-INT)	D	170X80X183	9.1	2	S6-C29
	3000	5000	2500	7.96	23.90	100X100	3.65	11.9	29.75	MS1H2-25C30CD-A331Z	SV670xT012I-FS(-INT)	D	170X80X183	9.1	2	S6-C29
	3000	5000	3000	9.8	29.16	130X130	7.72	11.9	29.75	MS1H2-30C30CD-A331Z	SV670xT012I-FS(-INT)	D	170X80X183	11.6	2	S6-C29
	3000	5000	3000	9.8	29.40	130X130	7.72	16.5	41.25	MS1H2-30C30CD-A331Z	SV670xT017I-FS(-INT)	E	250X90X230	11.6	3.94	S6-C29
	3000	5000	4000	12.6	37.80	130X130	12.1	16.5	41.25	MS1H2-40C30CD-A331Z	SV670xT017I-FS(-INT)	E	250X90X230	16.6	3.94	S6-C29
	3000	5000	5000	15.8	40.91	130X130	15.4	16.5	41.25	MS1H2-50C30CD-A331Z	SV670xT017I-FS(-INT)	E	250X90X230	18.8	3.94	S6-C29
	3000	5000	5000	15.8	47.60	130X130	15.4	20.8	52.12	MS1H2-50C30CD-A331Z	SV670xT021I-FS(-INT)	E	250X90X230	18.8	3.94	S6-C29
	1500	3000	850	5.39	13.50	130X130	13.3	3.5	11.00	MS1H3-85B15CD-A331Z	SV670xT3R5I-FS(-INT)	C	170X55X173	6.7	1.5	S6-C29
	1500	3000	1300	8.34	20.85	130X130	17.8	5.4	14.00	MS1H3-13C15CD-A331Z	SV670xT5R4I-FS(-INT)	C	170X55X173	8.2	1.5	S6-C29
	1500	3000	1800	11.5	28.75	130X130	25	8.4	20.00	MS1H3-18C15CD-A331Z	SV670xT8R4I-FS(-INT)	D	170X80X183	9.55	2	S6-C29
	1500	3000	2900	18.6	37.20	180X180	55	11.9	29.75	MS1H3-29C15CD-A331Z	SV670xT012I-FS(-INT)	D	170X80X183	16.6	2	S6-C39
	1500	3000	4400	28.4	71.10	180X180	88.9	16.5	41.25	MS1H3-44C15CD-A331Z	SV670xT017I-FS(-INT)	E	250X90X230	21.25	3.94	S6-C39
	1500	3000	5500	35	87.60	180X180	107	20.8	52.12	MS1H3-55C15CD-A331Z	SV670xT021I-FS(-INT)	E	250X90X230	26.8	3.94	S6-C39
	1500	3000	7500	48	117.63	180X180	141	25.7	64.25	MS1H3-75C15CD-A331Z	SV670xT026I-FS(-INT)	E	250X90X230	35.2	3.94	S6-C39

2.5 SV680N servo driver

The SV680N series servo driver is a high-end servo drive designed based on global leading standards and high-end application needs. It is featured with high speed, high precision, high performance, and tuning-free function. Covering a power range from 0.05kW to 7.5kW, the SV680N series servo driver carries EtherCAT communication interfaces to work with the host controller for a networked operation of multiple servo drivers. It is equipped with the latest ITune function that allows adaptive stiffness level setting, inertia auto-tuning, and vibration suppression for easy control. The SV680N series servo driver, together with an MS1 series high response servo motor (with ultra-low, low or medium inertia) equipped with a 26-bit single-turn/multi-turn absolute encoder, aims to deliver a quiet and stable operation and accurate process control through the fully closed-loop function and internal process segment function.



Description of Part Number

SV680
N
S
2R8
I

①
②
③
④
⑤

<p>① Product series SV680 series servo drive SV680L: SV680 series servo drive for direct-drive motors</p>	<p>④ Rated output current</p> <p>S: 220 V 1R6: 1.6 A 2R8: 2.8 A 5R5: 5.5 A 7R6: 7.6 A 012: 12.0 A 018: 18.0 A 022: 22.0 A 027: 27.0 A</p> <p>T: 380 V 3R5: 3.5 A 5R4: 5.4 A 8R4: 8.4 A 012: 12.0 A 017: 17.0 A 021: 21.0 A 026: 26.0 A</p>	<p>⑤ Configuration I: Standard type S: Functional safety type ...</p>
<p>② Product type N: Network type P: Pulse type F: Profinet (upcoming)</p>		
<p>③ Voltage class S: 220 V T: 380 V</p>		

	SV680N
Control mode	Cyclic synchronous position mode
	Cyclic synchronous velocity mode
	Cyclic synchronous torque mode
	Profile position mode
	Profile velocity mode
	Profile torque mode
	Homing mode
	Fully closed-loop control
Terminal	STO
	CN1 16-pin I/O terminal
	DB44
	DB15
Communication protocol	EtherCAT

Single-phase 220V drivers

Item		Size A		Size C		Size D
Servo drive model SV680N****I		S1R6	S2R8	S5R5	S7R6	S012
Servo drive power (kW)		0.2	0.4	0.75	1.0	1.5
Max. applicable motor capacity (kW)		0.2	0.4	0.75	1.0	1.8
Power supply capacity (kVA)		1.4	2.8	4.6	6.0	8.0
Continuous output current (Arms)		1.6	2.8	5.5	7.6	12.0
Max. output current (Arms)		5.8	10.1	16.9	23.0	32.0
Main circuit	Continuous input current (Arms)	2.3	4.0	7.9	9.6	12.8
	Main circuit power supply	Single-phase 200 VAC to 240 VAC, -10% to +10%, 50/60 Hz				
Control circuit	Control circuit power supply	Single-phase 200 VAC to 240 VAC, -10% to +10%, 50/60 Hz				
Regenerative resistor	Resistance	Non-standard	Non-standard	50	25	25
	Power	Non-standard	Non-standard	50	80	80
	Min. permissible resistance of external regenerative resistor (Ω)	40	40	40	20	15
	Max. braking energy absorbed by the capacitor (J)	9.3	18.59	32.42	32.42	47.68
	Configuration	Built-in and external regenerative resistors are supported by the whole SV680 family except servo drives in size A, which support external regenerative resistors only.				
Cooling method		Natural air cooling		Forced air cooling		
Overvoltage category		III				

3-phase 220V drivers

Item		Size A		Size C		Size D	Size E		
Servo drive model SV680N****I		S1R6	S2R8	S5R5	S7R6	S012	S018	S022	S027
Servo drive power (kW)		0.2	0.4	0.75	1.0	1.5	2.0	2.5	5.0
Max. applicable motor capacity (kW)		0.2	0.4	0.75	1.0	1.8	2.0	2.5	5.0
Power supply capacity (kVA)		1.21	2.42	3.84	5.05	6.68	8.33	10.42	20.08
Continuous output current (Arms)		1.6	2.8	5.5	7.6	12.0	18.0	22.0	27.0
Max. output current (Arms)		5.8	10.1	16.9	23.0	32.0	45	55	67.5
Main circuit	Continuous input current (Arms)	1.1	2.3	4.4	5.1	8.0	8.7	11.0	23.8
	Main circuit power supply	Three-phase 200 VAC to 240 VAC, -10% to +10%, 50/60 Hz							
	Control circuit power supply	Single-phase 200 VAC to 240 VAC, -10% to +10%, 50/60 Hz							
Regenerative resistor	Resistance	Non-standard	Non-standard	50	25	25	20	20	20
	Power	Non-standard	Non-standard	50	80	80	100	100	100
	Min. permissible resistance of external regenerative resistor (Ω)	40	40	40	20	15	20	20	20
	Max. braking energy absorbed by the capacitor (J)	9.3	18.59	32.42	32.42	47.68	64.84	78.19	95.36
	Configuration	Built-in and external regenerative resistors are supported by the whole SV680 family except servo drives in size A, which support external regenerative resistors only.					Built-in regenerative resistor by default, external regenerative resistor supported		
Cooling method		Natural air cooling		Forced air cooling					
Overvoltage category		III							

3-phase 380V drivers

Item		Size C		Size D		Size E		
Servo drive model SV680N****I		T3R5	T5R4	T8R4	T012	T017	T021	T026
Servo drive power (kW)		1.0	1.5	2.0	3.0	5.0	6.0	7.5
Max. applicable motor capacity (kW)		1.0	1.5	2.0	3.0	4.4	5.5	7.5
Power supply capacity (kVA)		6.05	9.08	10.23	15.15	22.25	25.0	31.25
Continuous output current (Arms)		3.5	5.4	8.4	12.0	17.0	21.0	26.0
Max. output current (Arms)		11.0	14.0	20.0	30.0	42.5	52.5	65.0
Main circuit	Continuous input current (Arms)	2.4	3.6	5.6	8.0	12.0	16.0	21.0
	Main circuit power supply	Three-phase 380 VAC to 480 VAC, -10% to +10%, 50/60 Hz						
Control circuit	Control circuit power supply	Single-phase 380 VAC to 480 VAC, -10% to +10%, 50/60 Hz						
Regenerative resistor	Resistance	100	100	50	50	35	35	35
	Power	80	80	80	80	100	100	100
	Min. permissible resistance of external regenerative resistor (Ω)	80	60	45	40	25	25	25
	Max. braking energy absorbed by the capacitor (J)	28.23	34.28	50.41	50.41	82.67	100.82	100.82
	Configuration	Built-in regenerative resistor						
Cooling method		Forced air cooling						
Overvoltage category		III						

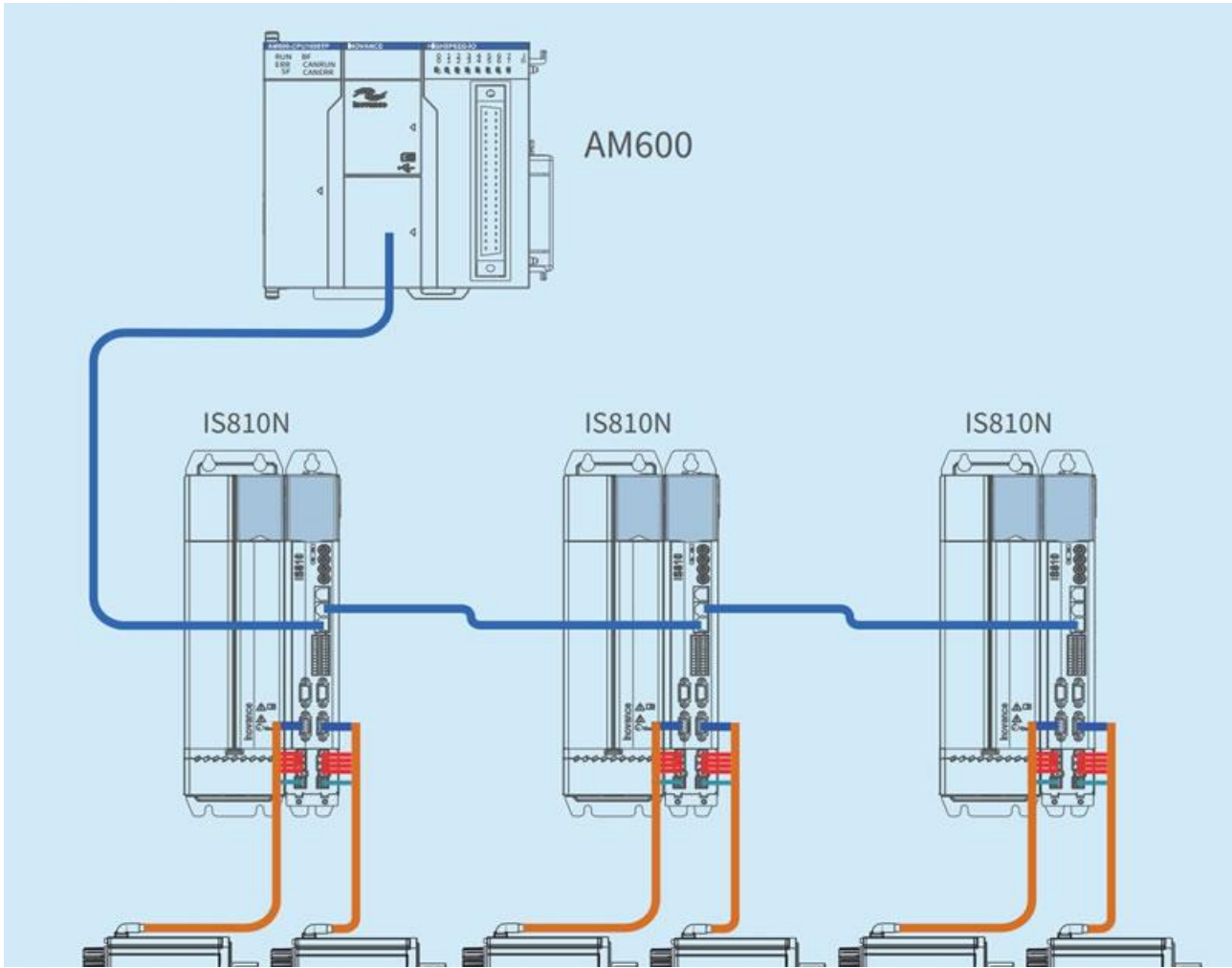
2.6 IS810N servo drivers

Multi-axes servo drive platform – for maximum performance in the most demanding applications

- Common power supply module: 22-355kW
- Single and dual axes modules: 850 W -75kW*
- Three phase 400V supply voltage
- Ultra-fast 4.5kHz current loop
- Speed loop bandwidth up to 2kHz
- Safe Torque Off – SIL 3
- Complies with CE

*dual axes available up to 18.5kW





Motor base speed (RPM)	Motor maximum speed (RPM)	Motor power (W)	Motor rated torque (N·m)	Motor peak torque (N·m)	Motor frame size (mm)	Rotor inertia (0.0001x kg·m ²)	MS1 motor type	IS810N type**	IS810N rated current (A)	IS810N peak current (A)	Size	Dimensions H x W x D (mm)
3,000	6,000	50	0.16	0.56	40x40	0.026	MS1H1-05B30CB-A330Z	IS810N50M4T_3R5INT	3.5	8.50	1	400 x 50 x 305
3,000	6,000	100	0.32	1.12	40x40	0.041	MS1H1-10B30CB-A330Z	IS810N50M4T_3R5INT	3.5	8.50	1	400 x 50 x 305
3,000	6,000	200	0.64	2.24	60x60	0.207	MS1H1-20B30CB-A331Z	IS810N50M4T_3R5INT	3.5	8.50	1	400 x 50 x 305
3,000	6,000	400	1.27	3.75	60x60	0.376	MS1H1-40B30CB-A331Z	IS810N50M4T_3R5INT	3.5	8.50	1	400 x 50 x 305
3,000	6,000	400	1.27	4.46	60x60	0.376	MS1H1-40B30CB-A331Z	IS810N50M4T_5R4INT	5.4	14.00	1	400 x 50 x 305
3,000	6,000	400	1.27	3.75	60x60	0.657	MS1H4-40B30CB-A331Z	IS810N50M4T_3R5INT	3.5	8.50	1	400 x 50 x 305
3,000	6,000	400	1.27	4.46	60x60	0.657	MS1H4-40B30CB-A331Z	IS810N50M4T_5R4INT	5.4	14.00	1	400 x 50 x 305
3,000	6,000	550	1.75	5.72	80x80	1.06	MS1H1-55B30CB-A331Z*	IS810N50M4T_5R4INT	5.4	14.00	1	400 x 50 x 305
3,000	6,000	750	2.39	6.93	80x80	1.38	MS1H1-75B30CB-A331Z	IS810N50M4T_5R4INT	5.4	14.00	1	400 x 50 x 305
3000	6000	750	2.39	8.36	80x80	1.38	MS1H1-75B30CB-A331Z	IS810N50M4T_8R4INT	8.4	20.00	1	400 x 50 x 305
3000	6000	750	2.39	6.93	80x80	2	MS1H4-75B30CB-A331Z	IS810N50M4T_5R4INT	5.4	14.00	1	400 x 50 x 305
3,000	6,000	750	2.39	8.36	80x80	2	MS1H4-75B30CB-A331Z	IS810N50M4T_8R4INT	8.4	20.00	1	400 x 50 x 305
3,000	6,000	1,000	3.18	7.93	80x80	1.75	MS1H1-10C30CB-A331Z*	IS810N50M4T_8R4INT	8.4	20.00	1	400 x 50 x 305
3,000	6,000	1,000	3.18	11.10	80x80	1.75	MS1H1-10C30CB-A331Z*	IS810N50M4T_012INT	12.0	28.00	1	400 x 50 x 305
3,000	6,000	1,000	3.18	9.54	100x100	1.87	MS1H2-10C30CD-A331Z	IS810N50M4T_5R4INT	5.4	14.00	1	400 x 50 x 305
3,000	5,000	1,500	4.9	14.70	100x100	2.46	MS1H2-15C30CD-A331Z	IS810N50M4T_5R4INT	5.4	14.00	1	400 x 50 x 305
3,000	5,000	2,000	6.36	19.10	100x100	3.06	MS1H2-20C30CD-A331Z	IS810N50M4T_8R4INT	8.4	20.00	1	400 x 50 x 305
3,000	5,000	2,500	7.96	19.12	100x100	3.65	MS1H2-25C30CD-A331Z	IS810N50M4T_8R4INT	8.4	20.00	1	400 x 50 x 305
3,000	5,000	2,500	7.96	23.90	100x100	3.65	MS1H2-25C30CD-A331Z	IS810N50M4T_012INT	12.0	28.00	1	400 x 50 x 305
3,000	5,000	3,000	9.8	27.44	130x130	7.72	MS1H2-30C30CD-A331Z	IS810N50M4T_012INT	12.0	28.00	1	400 x 50 x 305
3,000	5,000	3,000	9.8	29.40	130x130	7.72	MS1H2-30C30CD-A331Z	IS810N50M4T_017INT	16.5	42.00	2	400 x 100 x 305
3,000	5,000	4,000	12.6	37.80	130x130	12.1	MS1H2-40C30CD-A331Z	IS810N50M4T_017INT	16.5	42.00	2	400 x 100 x 305
3,000	5,000	5,000	15.8	41.65	130x130	15.4	MS1H2-50C30CD-A331Z	IS810N50M4T_017INT	16.5	42.00	2	400 x 100 x 305
3,000	5,000	5,000	15.8	47.60	130x130	15.4	MS1H2-50C30CD-A331Z	IS810N50M4T_021INT	20.8	55.00	2	400 x 100 x 305
1,500	3,000	850	5.39	13.50	130x130	13.3	MS1H3-85B15CD-A331Z	IS810N50M4T_3R5INT	3.5	8.50	1	400 x 50 x 305
1,500	3,000	1,300	8.34	20.85	130x130	17.8	MS1H3-13C15CD-A331Z	IS810N50M4T_5R4INT	5.4	14.00	1	400 x 50 x 305
1,500	3,000	1,800	11.5	28.75	130x130	25	MS1H3-18C15CD-A331Z	IS810N50M4T_8R4INT	8.4	20.00	1	400 x 50 x 305
1,500	3,000	2,900	18.6	37.20	180x180	55	MS1H3-29C15CD-A331Z	IS810N50M4T_012INT	12.0	28.00	1	400 x 50 x 305
1,500	3,000	4,400	28.4	71.10	180x180	88.9	MS1H3-44C15CD-A331Z	IS810N50M4T_017INT	16.5	42.00	2	400 x 100 x 305
1,500	3,000	5,500	35	87.60	180x180	107	MS1H3-55C15CD-A331Z	IS810N50M4T_021INT	20.8	55.00	2	400 x 100 x 305
1,500	3,000	7,500	48	119.00	180x180	141	MS1H3-75C15CD-A331Z	IS810N50M4T_026INT	25.7	65.00	2	400 x 100 x 305

*Motor does not have an option with a brake **All drives are available in single axis (TS) or dual axes (TD)

2.7 SV820N multi-axes servo drivers

A multi-axes servo platform, available in 3 or 4 axes versions, with a common power supply module. The drive features an ultra-fast control loop regulator and a high dynamic response rate. It is designed to seamlessly integrate with MS1 motors from 50-750W. Supports CANopen and EtherCAT communications

- Power supply unit: 1-2kW
- Single/double unit axis module: 1.1-7.6A
- Ultra-fast current loop
- STO SIL 3 – in accordance with EN/IEC 61800-5-2
- EtherCAT CiA 402 motion profile as standard
- Easy commissioning and installation
- Small footprint for robot applications
- IP67
- Complies with CE

SV820 - N 1S 2C 2C FS

① ② ③ ④ ⑤ ⑥

- ① **Drive series:**
SV820 series
- ② **Control board type:**
N: EtherCAT
- ③ **Power supply unit type:**
1S: 1 kW
2S: 2 kW
- ④ **Drive unit 1**
Dual axes drive unit (rated current per axis)
2C: 2.8 A (400 W)
2D: 4.6 A (750 W)
- ⑤ **Drive unit 2**
Single axis drive unit (rated current)
1C: 2.8 A (400 W)
1D: 4.6 A (750 W)

Dual axes drive unit (rated current per axis)
2C: 2.8 A (400 W)
2D: 4.6 A (750 W)
- ⑥ **Variant**
Blank: No STO
FS: STO version (default variant)
FH: robust design for harsh environments

EtherCAT Drive Model	Axes	Input Power 220 V AC	Rated Output Power of Power Supply Unit	Axis 1 Output Current	Axis 2 Output Current	Peak Output Current (3 s)	Axis 3 Output Current	Axis 4 Output Current	Peak Output Current (3 s)
		Power supply unit		Drive unit 1			Drive unit 2		
SV820N2S2C2C	4 axes	Three phase	2 kW	2.8 A	2.8 A	8.4 A	2.8 A	2.8 A	8.4 A
SV820N2S2C2D	4 axes	Three phase	2 kW	2.8 A	2.8 A	8.4 A	4.6 A	4.6 A	13.8 A
SV820N1S2C1C	3 axes	Single/three phase	1 kW	2.8 A	2.8 A	8.4 A	2.8 A	-	8.4 A
SV820N2S2C1D	3 axes	Three phase	2 kW	2.8 A	2.8 A	8.4 A	4.6 A	-	13.8 A
SV820N2S2D1D	3 axes	Three phase	2 kW	4.6 A	4.6 A	13.8 A	4.6 A	-	13.8 A

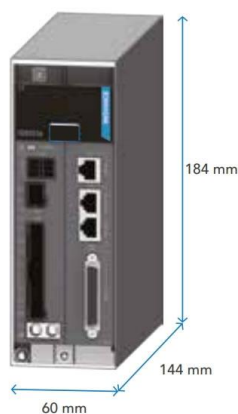
2.8 A axis controls up to 400 Watt motors
4.6 A axis controls up to 750 Watt motors

Product dimensions

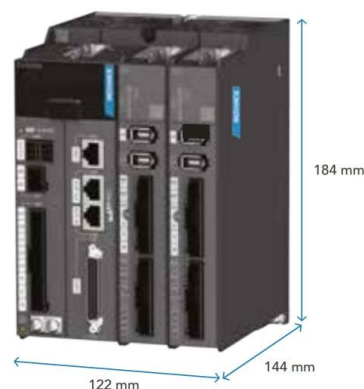
Single and dual axes drive unit dimensions



Power supply unit dimensions



4 axes unit dimensions



2.8 IS620 servo drivers

2.8.1 IS620N servo driver

Ethercat servo driver for industrial applications

- Speed loop bandwidth up to 1.2kHz
- Supply voltage: Single phase 220V; Three phase 220V; Three phase 380V
- 0.1-7.5kW
- EtherCAT communications
- Built-in keypad
- Fine tuning with PC software (InoServoShop)
- Inertia auto-tuning (on-line/off-line)
- Automatic gain tuning
- Adaptive notch filter
- Automatic/manual damping filter for low frequency resonance
- Complies with CE



2.8.2 IS620P servo driver

High performance servo system

- High speed loop bandwidth: up to 1.2kHz
- Supply voltage: Single phase 220V; Three phase 220V; Three phase 380V
- 0.1-7.5 kW
- Pulse/direction
- CANopen communications (IS620P-CO variant)
- Built-in keypad
- Fine tuning with PC software (InoServoShop)
- Inertia auto-tuning (on-line/off-line)
- Automatic gain tuning
- Adaptive notch filter
- Automatic/manual damping filter for low frequency resonance
- Complies with CE



IS620 P S 5R5 I - A - INT

① ② ③ ④ ⑤ ⑥ ⑦

① Series IS620 servo drive	④ Rated output current 1R6: 1.6 A ... 021: 21 A 026: 26 A	⑥ Customized function A: 16-bit analog input C: CANlink CO: CANopen
② Product type P: pulse/analog N: EtherCAT	⑤ Installation I: base mount	⑦ Version INT: international
③ Voltage class S: 220 Vac T: 400 Vac		

Servo drive specifications

Single-phase 220 V

Frame size	SIZE-A		
Model no.	S1R6	S2R8	S5R5
Rated current (A)	1.6	2.8	5.5
Maximum current (A)	5.8	10.1	16.9
Input voltage	Single-phase 200 to 240 Vac, +10 to -15%, 50/60 Hz		
Internal DBR	No	50Ω / 50 W	

Three-phase 220 V

SIZE-A	SIZE-C	
S5R5	S7R6	S012
5.5	7.6	11.6
16.9	17	28
Three-phase 200 to 240 Vac, +10 to -15%, 50/60 Hz		
50Ω / 50 W	25Ω / 80 W	

Three-phase 380 V

Frame size	SIZE-C				SIZE-E		
Model no.	T3R5	T5R4	T8R4	T012	T017	T021	T026
Rated current (A)	3.5	5.4	8.4	11.9	16.5	20.8	25.7
Maximum current (A)	8.5	14.0	20.0	24.0	42.0	55.0	65.0
Input voltage	Three-phase 380 to 440 Vac, +10 to -15%, 50/60 Hz						
Internal DBR	100Ω / 80 W		50Ω / 80 W		40Ω / 100 W		

Notes: internal DBR is built-in regenerative resistor specification

Models S1R6 and S2R8 are not configured with a built-in regenerative resistor. Use an external regenerative resistor if necessary

3. Easy Series PLC

A complete product range – from the simplest to the most complex motion control capable PLC. Our PLCs are reliable and durable. They are available in small and medium sizes, support bus applications, and can be flexibly combined. Meanwhile, our HMIs offer clear displays and an easy-to-use format. They can be integrated with any third party equipment, but, for optimal performance, are designed to be used as a package with other products, such as PLCs and variable speed drives.



- PLCopen compliant axis control
- Simulation mode for offline debugging

- Real-time fieldbus
- Axis group for lineal and circular interpolation, CAM table functionality
- Supports function block and function for encapsulation, code reusability, and scalability
- ST, LD, SFC language support
- Multiple communication protocols: Modbus RTU/TCP; CANopen (optional); Ethernet/IP (scanner)

There are series Easy301, 302, 520, 502 & 523.

Easy301: Ultra compact CPU, RS232 + RS485

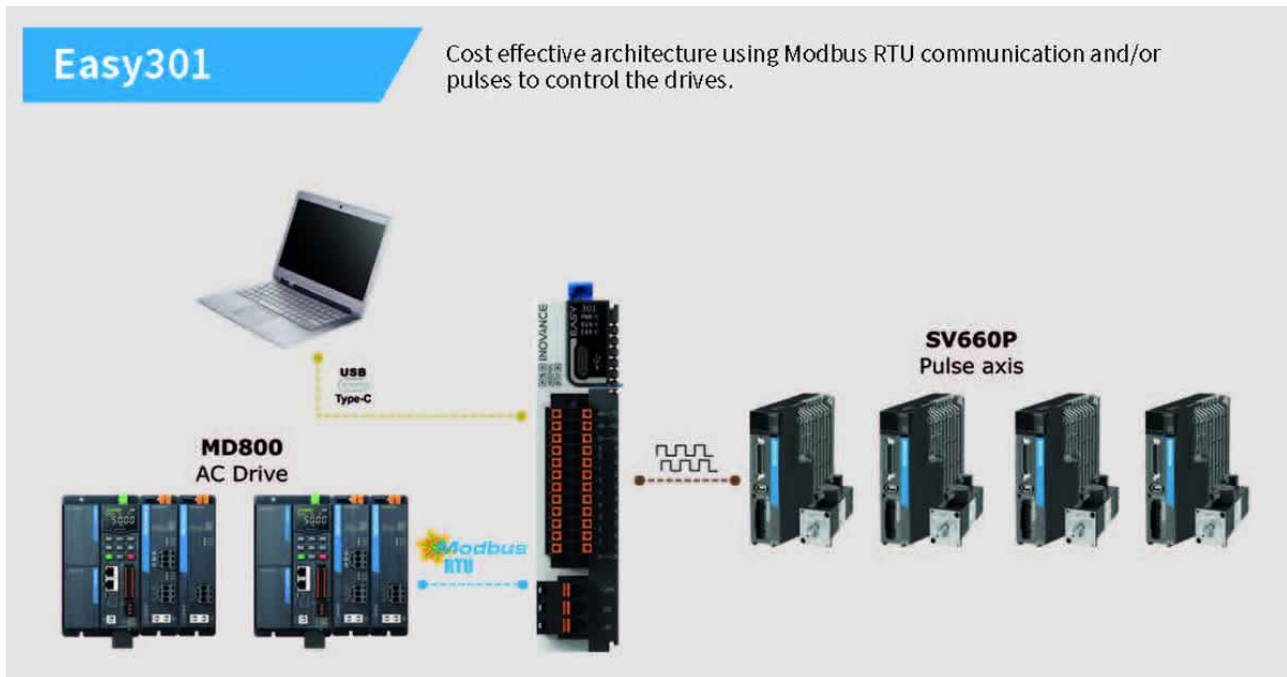
Easy302: General CPU, RS232 + RS485\

Easy320: CPU with Ethernet, Dual Ethernet + RS485

Easy502: Motion control CPU, EtherCAT + RS485

Easy523: Motion control CPU with Ethernet, Dual Ethernet+ EtherCAT + RS485

- EASY programming: Customized FB/FC self defined variable programming assistant.
- EASY assembly & wiring: Easy to add and/or replace modules. Plug in wires directly with spring clamp terminals.
- EASY commissioning: Auto device scanning, easy configuration, servo debug without programming, offline simulation.
- The type-C port works as a programming port allowing support programs, uploading/downloading and debugging.
- Easy wiring with spring clamp terminals.
- Slim and compact I/O expansion modules (GL20). Easy to plug in and remove for fast replacement.
- Scalable system architecture & multiple configurations.



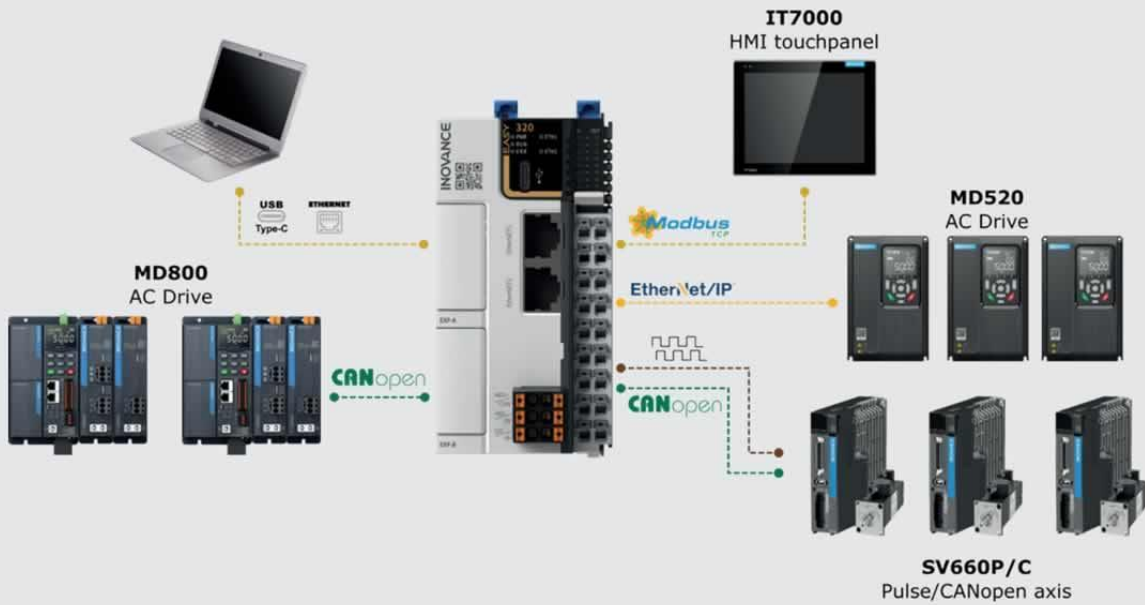
Easy302

Flexible architecture using CANopen communication and/or pulses to control the drives.



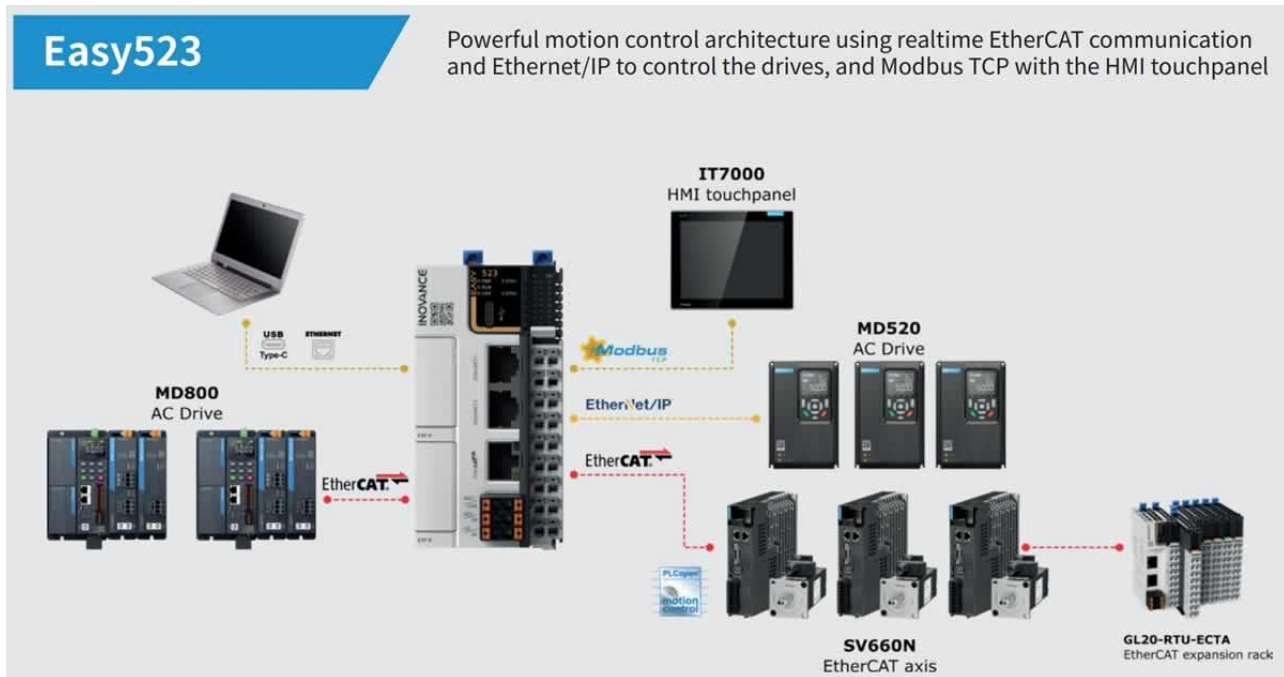
Easy320

Multiprotocol architecture using Ethernet/IP, CANopen communication and/or pulses to control the drives, and Modbus TCP with the HMI touchpanel



Easy523

Powerful motion control architecture using realtime EtherCAT communication and Ethernet/IP to control the drives, and Modbus TCP with the HMI touchpanel



Item	Easy300		
	Easy301-0808TN	Easy302-0808TN	Easy320-0808TN
Part number	01440323	01440324	01440325
Motion axis	4 pulse control axes	5 pulse control axes	5 pulse control axes
Expansion modules (GL20)	8	16	
Expansion slots (GE20)	–	2 (support communication/digital IO/analog IO/TF card/R	
Ethernet	–		2 Modbus TCP up to 32 slav Ethernet/IP scanner/adap
EtherCAT	–		
Serial communication	1 x RS232 1 x RS485 Support free protocol, Modbus RTU/ASC up to 16 slaves	1 x RS232, 1 x RS485 Support 1 x RS232/485 expansion and 1 x CAN expansion Support free protocol, Modbus RTU/ASC 16 slaves (recommended)	1 x RS485 Support 2 x RS232 /485 expansion and 1 x CAN expansion Support free protocol, Modbus RTU/ASC 16 slaves (recommended)
CAN communication	–	1 (requires expansion card), supports CANlink/CANopen n	
Program storage	128 K step		
Data storage	1 Mbyte (128 KB non-volatile) 150 KB soft element, non-volatile after No.1000		
Instruction execution time	20 K step / 2 ms		
Dimensions (WxHxD: mm)	24x100x83	40x100x83	53x100x80
Other interfaces	Type C	Type C, TF card (requires TF card expansion module)	
CAM and interpolation	–	Supports CAM and interpolation motion	
Encoder axis	4 channel encoder axis (8 x high speed inputs, up to 200 KHz)		
Built in I/Os	8 inputs (selectable sink/source) and 8 outputs (sink type - available, source type - con		
Programming languages	LD, SFC, ST, FB/FC (supports encryption functionality)		
Power supply	DC24V		

¹Synchronised axes

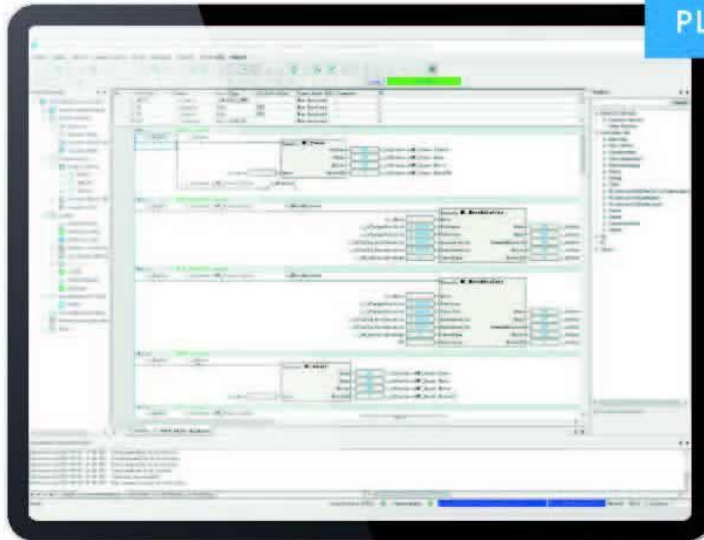
²EtherCAT slaves include I/Os and synchronised and non-synchronised axes

Easy500	
Easy502-0808TN	Easy523-0808TN
01440336	01440326
A total of 16 synchronised axes are possible. This can be a max. of 16 EtherCAT axes ¹ , or a combination that includes a max. of five pulse control axes	A total of 32 synchronised axes are possible. This can be a max. of 32 EtherCAT axes ¹ , or a combination that includes a max. of five pulse control axes
	2
-	Modbus TCP up to 32 slaves
	Ethernet/IP scanner/adaptor
Support up to 72 EtherCAT slaves ² (including synchronised axes)	
1 x RS485 Support 2 x RS232/485 expansion and 1 x CAN expansion Support free protocol, Modbus RTU/ASC 16 slaves (recommended)	1 x RS485 Support 2 x RS232/485 expansion Support free protocol, Modbus RTU/ASC 16 slaves (recommended)
er/slave (up to 62 slaves)	
200 k step	
2 Mbyte (128 KB non-volatile)	
20 K step / 1.6 ms	

Autoshop

A powerful PC tool is provided as standard

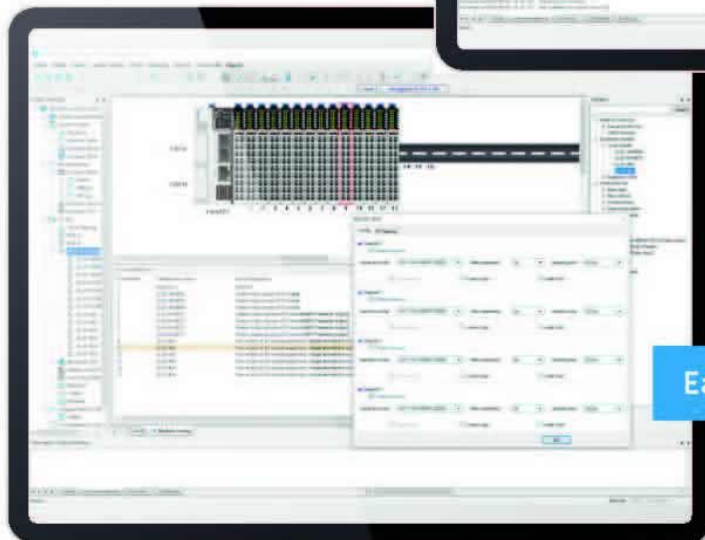
PLCopen FB



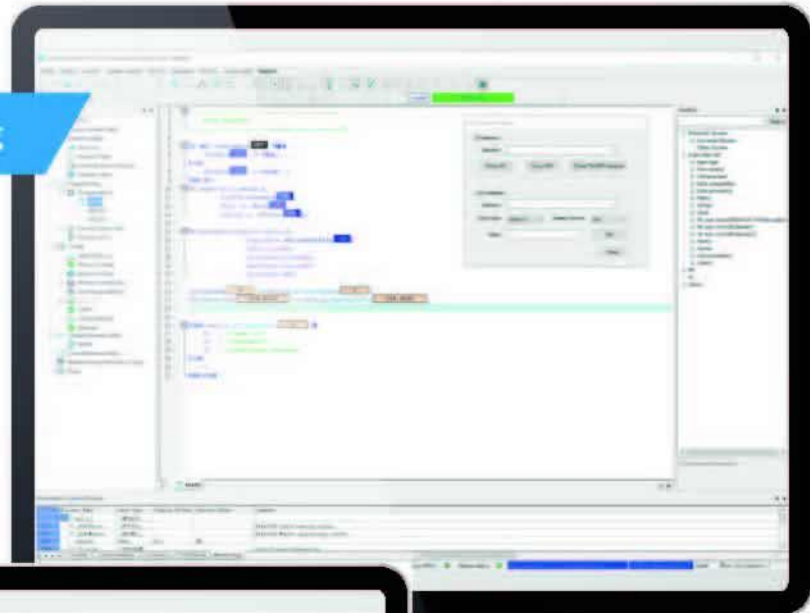
Hardware simulation



Easy hardware configuration



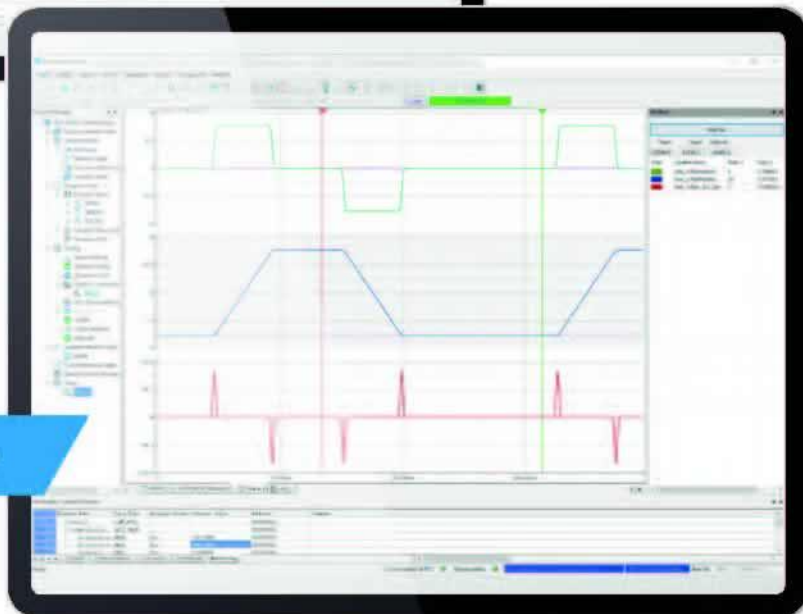
ST programming



Axis commissioning tool



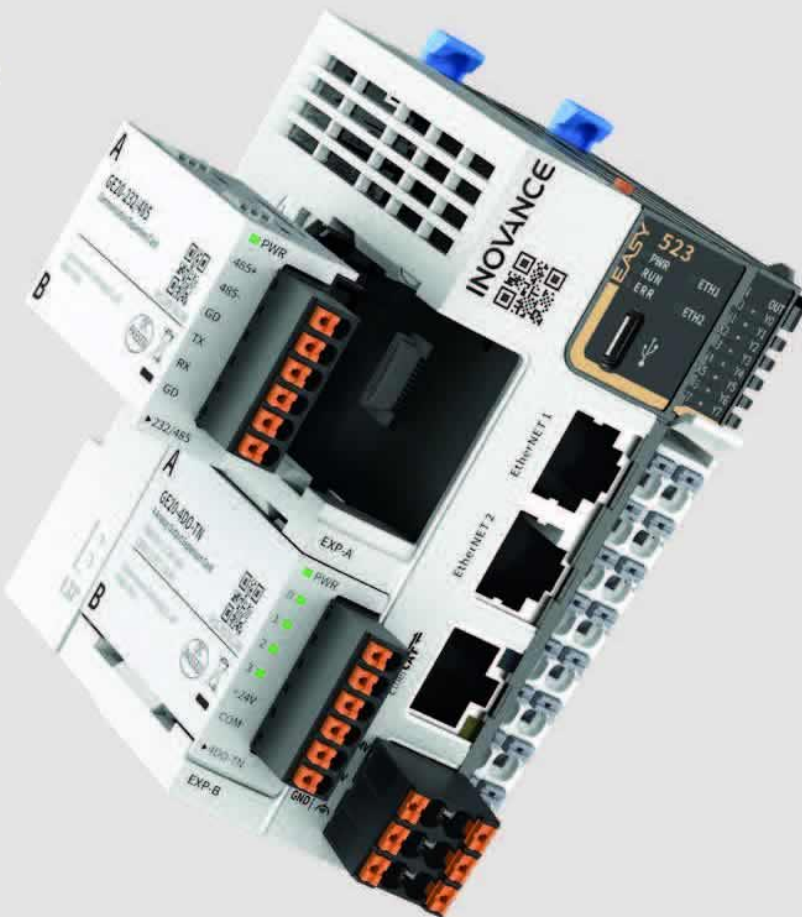
Trace



Expansion capability GE20 expansion cards

Expansion slot A

Expansion slot B



Communications capabilities:

- RS485 connection - up to 31 slaves
- CANopen - up to 62 slaves
- CANlink - up to 62 slaves
- Modbus TCP - up to 32 slaves (working as client/master)
- Modbus TCP - up to 16 masters (working as server/slave)
- Up to 3 serial ports (RS232/485) - 1 onboard and 2 GE20 expansion cards

Product appearance	Expansion card	Product code	Description
	GE20-4DO-TN	01480033	4 channel sink outputs
	GE20-4DI	01480032	4 channel source/sink inputs
	GE20-2AD1DA-I	01480027	2 analog inputs and 1 analog current output
	GE20-2AD1DA-V	01480028	2 analog inputs and 1 analog voltage output
	GE20-232/485-RTC	01480035	RS232/485 expansion card with RTC
	GE20-232/485	01480029	RS232/485 expansion card
	GE20-CAN-485	01480034	CAN/RS485 expansion card with RJ45 interface
	GE20-RTC	01480031	RTC expansion card
	GE20-TF	01480030	TF expansion card

4. AC703 IPC Motion Controller

High Performance Intelligent Controller for demanding industrial applications

- CPU: Intel Celeron J1900 2.0GHz
- 32 axes at 1 ms EtherCAT period: Maximum 32 axes, 128 slave stations; EtherCAT I/O expansion support. Up to 128 EtherCAT remote

Wuhan Sintec Optronics Co Ltd , Sintec Industrial Park , Optics Vally of China, Wu
 Tel: +86 13418303942, Fax: +86 27 51858989 sintec@SintecLaser.com ;www.sintecoptr



I/O modules

- Multi-layer networking due to support for multiple communication protocols including: EtherCAT, Modbus TCP/RTU, Ethernet IP, OPC UA
- Compatible with legacy equipment through built-in Modbus RTU master/slave protocol and 2 separate communication interfaces: RS485 and RS232
- IEC 61131-3 programming languages: ST, LD, SFC, CFC
- System software contains: PLCopen, CAM, CNC, and ROBOT motion control components
- Remote commissioning and industrial IoT capabilities
- Embedded Webvisu server
- EoE support with SV660N drives

AC703 features & functions



Comprehensive functionality

- Remote commissioning and industrial IoT capabilities
- Embedded Webvisu server
- EoE support with Inovance drives



Advanced programming capabilities

- IEC 61131-3 programming languages:
 - ST, LD, SFC, CFC
- System software contains:
 - PLCopen, CAM, CNC, and ROBOT motion control components



Cutting-edge hardware

- CPU: Celeron series
- Safe shut-down (registers are saved in non-volatile memory)



High performance

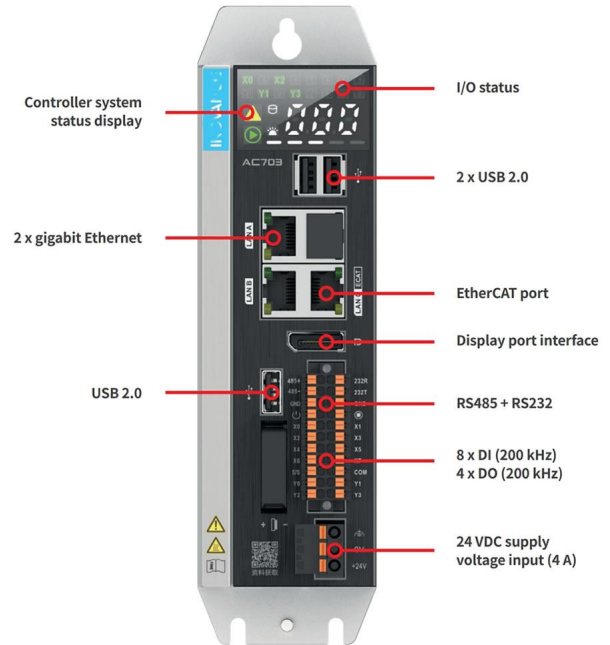
- 32 axes at 1 ms EtherCAT period
- Maximum 32 axes, 128 slave stations
- EtherCAT I/O expansion support:
 - Up to 128 EtherCAT remote I/O modules¹
 - GR10, GL10 & GL20 I/O expansion modules can be supported



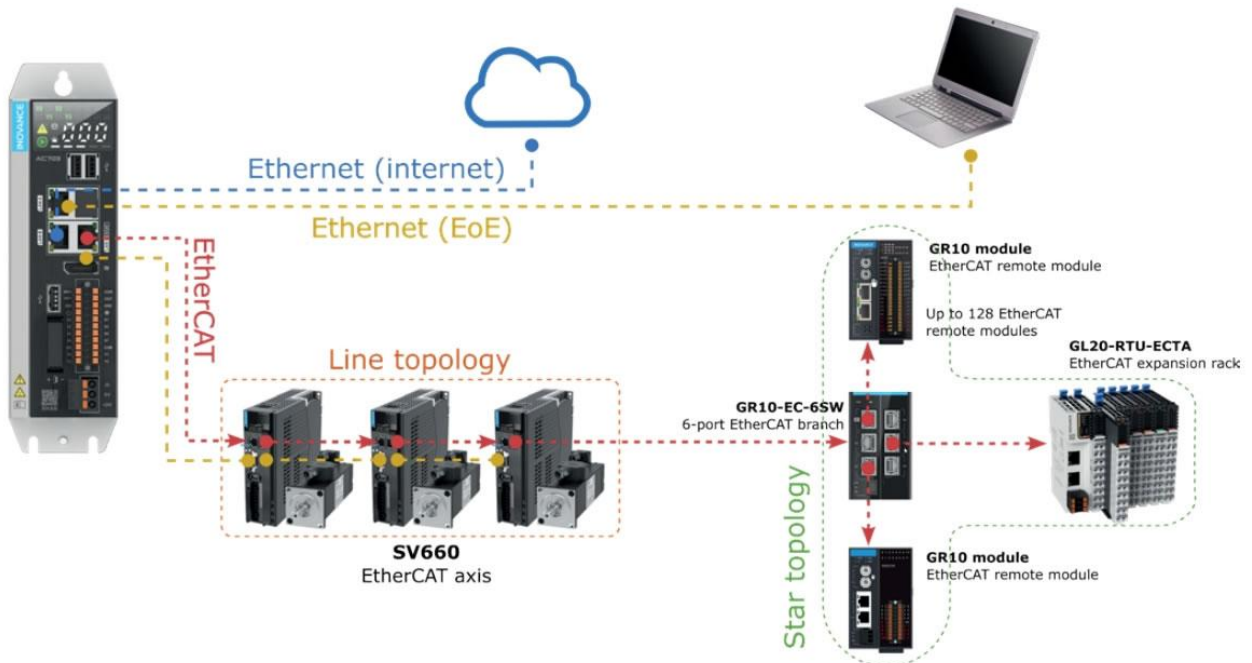
Flexible communications

- Multi-layer networking due to support for multiple communication protocols including:
 - EtherNet/IP
 - OPC UA
 - Modbus TCP
- Compatible with legacy equipment through built-in Modbus RTU master/slave protocol and 2 separate communication interfaces: RS485 and RS232

¹Please note: 128 is the total number of EtherCAT slaves
²GL10-RTU-ECAT EtherCAT bus coupler required for GL10 modules.
 GL20-RTU-ECAT EtherCAT bus coupler required for GL20 modules



Example EtherCAT system architecture



Hardware	
Processor	Intel J1900, 2.0 GHz
Memory	4G DDR3, 64G mSATA SSD, 64M SPI Flash
Status display	DI/DO status, fault code, SSD drive activity, running status, CPU usage
Ethernet ports	1x EtherCAT, 2x Ethernet
Serial communication	1x RS485, 1x RS232
DI/DO	8x High Speed inputs (200 kHz), 4x High Speed outputs (200 kHz)
Display port	DP
Power input	24VDC (-15%~20%)
UPS backup power	Built-in Safe Shut-Down (registers are saved in non-volatile memory)
Cooling fan	Fanless natural cooling
EMC test standards	EN/IEC 61000-6-2:2019, EN/IEC 61000-6-4:2019, EN 61131-2:2007, EN 55011:2016/A11:2020
Working / storage temperature	-5°C~55°C/-25°C~70°C
Dimensions (H x W x D)	160 x 55 x 147 (mm)
Mass	1.3 kg

Software	
OS	Linux/RT
System software	Full support for PLCopen
	Inovance InoProShop based on CODESYS® PLCopen/SoftMotion with CODESYS Runtime, supporting all motion control functions such as PLCopen/CAM/CNC/ROBOT
Bus	EtherCAT master
Control axis capability of EtherCAT master	32 axes at 1 ms period
	Max. 32 axes, supports 128 stations
Display port (DP)	Reserved
Ethernet protocols	Ethernet/IP (scanner and adapter), OPC UA (server), Modbus TCP (master/slave)